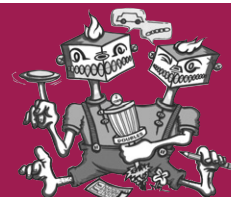


Visit  
[jtowndiscgolf.com](http://jtowndiscgolf.com)  
 for scores, results and  
 stats throughout the year.  
 Plus local & regional  
 disc golf information.

# J-TOWN DISC GOLF DOUBLES LEAGUE

## 2012 FIRST HALF SCHEDULE - WEDNESDAYS

### CHECK FOR START TIMES



<b>APRIL</b>	(5:15P.M.)	4	SHORT TEES	Shorewood Park Shorewood
	(5:15P.M.)	11	SHORT TEES 18 HOLES ONLY!	West Park Joliet
	(5:15P.M.)	18	SHORT TEES	Trinity Links Lockport
	(5:15P.M.)	25	SHORT TEES	Community Park Channahon
<b>MAY</b>	(5:30P.M.)	2	RED TEES	Highland Park Joliet
	(5:30P.M.)	9	SHORT TEES	Trinity Links Lockport
	(5:30P.M.)	16	SHORT TEES	Community Park Channahon
	(5:30P.M.)	23	SHORT TEES	West Park Joliet
	(5:30P.M.)	30	WHITE TEES	Highland Park Joliet
<b>JUNE</b>	(5:30P.M.)	6	WHITE TEES	The Oaks Mokena
	(5:30P.M.)	13	LONG TEES	West Park Joliet
	(5:30P.M.)	20	TBD	Community Park Channahon
	(5:30P.M.)	27	TBD	Highland Park Joliet

**ENTRY: \$10 PRO/ADV - \$5 AM/NOV**

**OPTIONAL:** \$1 Ace Fund - \$2 CTP 50/50 - \$2 Basket Fund 50/50 - \$2 Tournament Fund 50/50

As always Wednesday's doubles will be split into two seasons April-June & July-September. Trophies will be handed out at the party on Saturday October 20, 2012 to the top four Pro/Adv. players and the top four Am/Nov. players (Thanks Dale DelSasso, Gary Lewis & Rob Martis for the Trophies)

Also trophies for the top three places in each division with the highest overall point average will be handed out at the party.

Points will be awarded as follows:

1<sup>st</sup> place finishes 4pts. - 2<sup>nd</sup> place 3pts. - 3<sup>rd</sup> place 2pts. - EVERYBODY ELSE 1pt.

All Ams & Novice players will pair together.

All Pros & Advanced players will pair together.

*SECOND HALF SCHEDULES WILL BE OUT IN JUNE*

For more Info: Jesse Saenz: Cell (630) 312-9477 • Home (630) 759-6818 • [disc71@comcast.net](mailto:disc71@comcast.net)  
 Darrin Johnson: Cell (815) 823-6079 • Home (815) 730-3188 • [darrinjohnson68@gmail.com](mailto:darrinjohnson68@gmail.com)