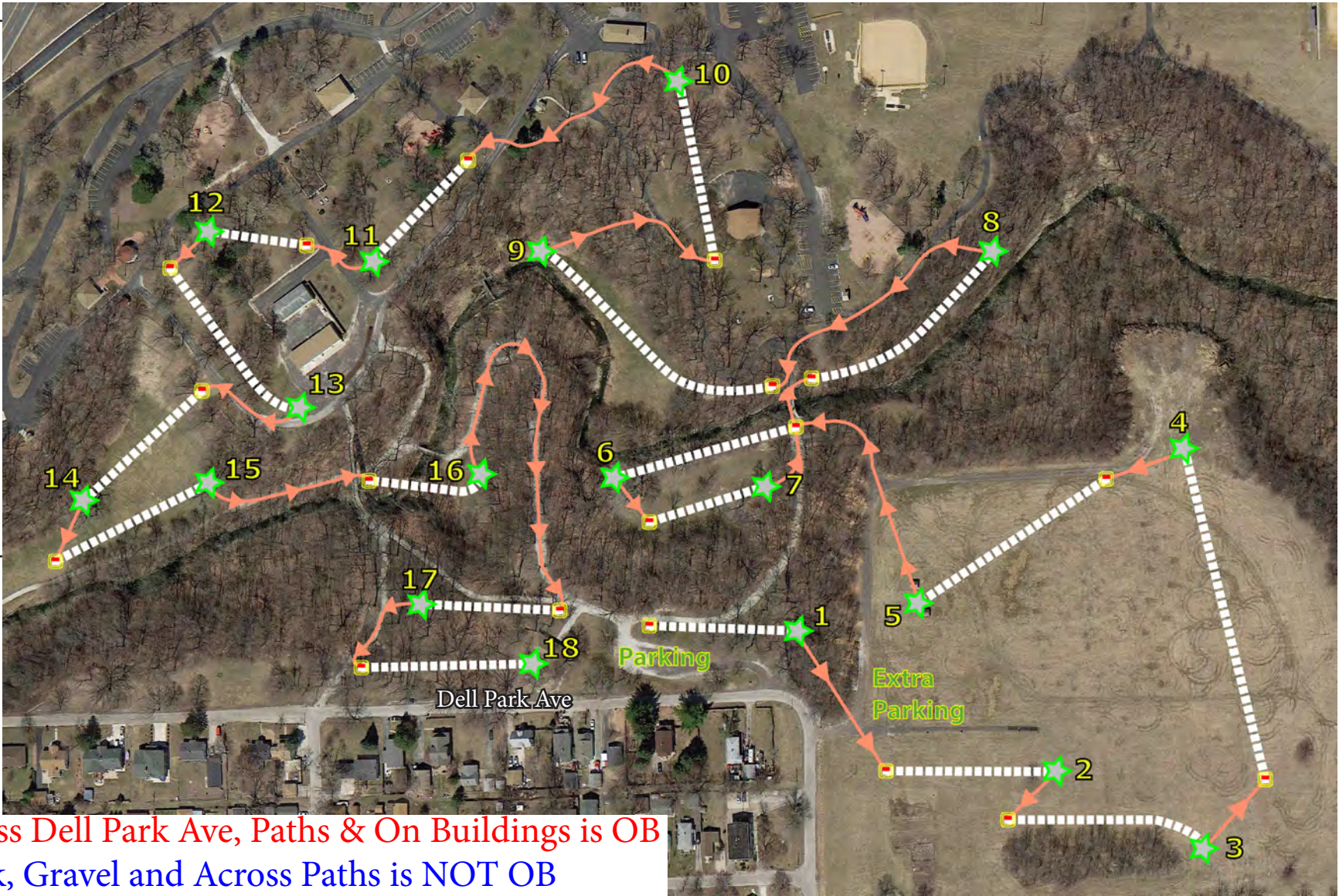


Hole	Length	Par
1	240	3
2	360	3
3	330	3
4	540	4
5	350	3
6	310	3
7	235	3
8	272	3
9	300	3
10	310	3
11	240	3
12	210	3
13	315	3
14	325	3
15	285	3
16	185	3
17	270	3
18	260	3
	5337	55



Roads, Across Dell Park Ave, Paths & On Buildings is OB  
 Creek, Gravel and Across Paths is NOT OB

**NOTES:**

- Follow orange arrows for next hole.
- Walk to 8- You have to cross back into hole 6 tee.
- Hole 8- CAUTION steep rocky down hill to tee.
- Walk to 10- CAUTION steep up hill climb.
- Hole 14- CAUTION old toboggan hill, steep down hill walk
- Walk to 17- Follow the path up the hill and around to 17s tee. A longer walk.